



Memphis Metropolitan Stormwater – North DeSoto County Feasibility Study, DeSoto County, Mississippi



Appendix N-Recreation

May 2021

CONTENTS

Section 1	1
Tables	1
Section 2	10
Figures	10
2.1 RECREATION FIGURES	10
References and Resources	13
List of Acronyms and Abbreviations	14

LIST OF TABLES

Table N-1. Public Recreation Resources within the Study Area	1
Table N-2. Land & Water Conservation Fund: Study Area Recreation Projects Since 1965 ...	9

LIST OF FIGURES

Figure N-3. Recreation at Channel Enlargement	10
Figure N-4. Recreation at Cow Pen Creek Detention Site	11
Figure N-5. Recreation at Rocky Creek Detention Site	12

Section 1

Tables

The study area is within the Mississippi North Delta Planning and Development District and is included in the Mississippi Statewide Comprehensive Outdoor Recreation Plan (SCORP). DeSoto County has 44 active recreation facilities and 30 passive recreation facilities according to Mississippi SCORP “Ensuring Mississippi’s Outdoor Legacy” 2019-2024 prepared for the Mississippi Department of Wildlife, Fisheries, & Parks (MDWFP). These 74 facilities are managed by MDWFP resources and/or DeSoto County resources.

The source of the information below can be found at the websites for each managing agency listed where applicable. An inventory was collected during April 2020 through GIS reference, website reference, and aerial imagery. Recreation resources within the study area are not limited to this list.

Table N-1. Public Recreation Resources within the Study Area

Name	Description	Location	Community	Type
Addie Baldwin Park	Addie Baldwin Park is known as "The Cage" and features public basketball courts.	330 Hill Street	Hernando	Sports/Fitness
ARK Trail (Arkabutla Lake Education and Nature Center)	The trail is in a wildlife sanctuary and consists of 2 miles of woodland trails featuring interpretive signs and an outdoor amphitheater that can accommodate outdoor education classes.	7001 Hwy 304	Hernando	Nature
Bouchillion Park	Open space with no equipment or picnic tables, Bouchillion Park was donated by the A.W. Bouchillion family.	Green T Blvd, off Byhalia Rd, in Hernando Hills subdivision	Hernando	Neighborhood
Brookhaven Park (Dickson Park)	This park features a playground, pavilion, and walking trail.	2719 Brookhaven Dr	Southaven	Neighborhood
Caprock Cove Park	This neighborhood park features a ball field and plenty of open space.	8225 Caprock Cove	Southaven	Neighborhood
Caroline Park	Caroline Park is a small park with swings surrounded by a beautiful tree line.	5255 Caroline Dr	Horn Lake	Neighborhood

Name	Description	Location	Community	Type
Carriage Hills Estates Park	This small neighborhood park provides open space in a natural setting.	8770 Five Oaks Drive West	Southaven	Neighborhood
Central Park	This full-featured park features a playground, pavilion, backstops, disc golf, and walking trails, set in a natural area with two lakes.	7505 Stonegate Blvd	Southaven	Neighborhood
Chaparral Park	This neighborhood park features open space and a small playground on the shore of a lake.	8355 Chaparral Ln	Southaven	Neighborhood
Chapel Park	Chapel Park offers a great playground, open play space, swings, and a gravel walking trail.	5700 Chapel Hill Dr	Horn Lake	Neighborhood
Cherry Valley Park	This park features a playground and walking trail, as well as lighted football fields.	7505 Cherry Valley Dr	Southaven	Neighborhood
Choctaw Park	Choctaw Park contains a beautiful playground with swings and open play space.	5825 Choctaw Dr	Horn Lake	Neighborhood
Church Park	Church Park has 2 tennis courts, an activity pad, a small playground, and a small pavilion available for rental.	60 W Center Street (across from the Post Office)	Hernando	Neighborhood
Churchwood Park	Located in Churchwood subdivision, Churchwood Park is frequented by children for its playground.	1875 Greeno Dr	Horn Lake	Neighborhood
Cockrum Community Park	The Cockrum Community Park and Trail is located just off of MS 305 in Eastern Desoto County, MS. This park is located next to the Cockrum Fire Department and features a 1/4-mile walking trail, playground, and picnic area.	10145 Holly Springs Rd	Cockrum	Neighborhood
Coldwater River Canoe and Kayak Trail	The Coldwater River Canoe and Kayak Trail meanders from Mississippi Highway 309 westward to US Highway 51 at Arkabutla Lake, just south of Hernando, DeSoto County, Mississippi.	Put in along the route anywhere on public land	Multiple Counties	Nature
Conger Park	Hernando's largest park includes a community-built playground, 3 pavilions, 2 tennis courts, 2 walking trails and restrooms. The pavilions are available for rental. Conger Park is a great park for	135 W Oak Grove Road (at Hwy 51)	Hernando	Neighborhood

Name	Description	Location	Community	Type
	picnics and parties.			
DeSoto County Veteran's Park	This park will honor all U.S. Veterans, from the Revolutionary War to the most recent conflicts in the Middle East. There will be monuments, plaques, and a Walk of Honor trail that circles a pond on the edge of the Civic Center grounds.	4716 Pepperchase Dr	Southaven	Neighborhood
DeSoto Woods Park	This neighborhood park features basketball courts as well as open space for various other activities.	750 Brookside Rd	Southaven	Neighborhood
Dub Patton Recreation Area	Located on Arkabutla Lake at the end of Hwy 301 South, Dub Patton has 66 campsites, a variety of boat ramps, playgrounds, picnic sites, nature trails, and a swimming beach. The nearby Outlet Channel is a popular fishing spot.	5908 Arkabutla Lake Rd	Hernando	Boating/Fishing
Elmore Park	This park boasts a natural wooded setting.	5915 Elmore Rd	Southaven	Neighborhood
Eudora Community Park and Trail	This park is in Western DeSoto County next to the Fire Department and features a walking trail, playground, and a ball field. The walking trail is approximately 1/3 mile in length.	9133 HWY 304 W	Eudora	Neighborhood
Fairfield Meadows Park	Fairfield Meadows has a small playground area and covered picnic table with acres of open space for kids to run and play.	4145 Rosebury Ln	Horn Lake	Neighborhood
Fairview Park	This park is located just off exit 10 on Hwy 78 East and features a walking trail, playground, picnic area and a lighted ball field. The walking trail is approximately 1/4 mile in length.	1372 Red Banks Rd N	Byhalia	Neighborhood
George M. Harrison Soccer Complex	Amenities include 5 lighted international size soccer fields, automated lighting control system, automated irrigation, small pavilion, and lake.	8700 Church Rd E	Olive Branch	Sports/Fitness

Name	Description	Location	Community	Type
Greenbrook Lake Park	This lakeside park features a playground, picnic area, pavilion, restrooms, and walking trail.	295 Stateline Rd E	Southaven	Neighborhood
Greenbrook Softball Complex	Located off of Greenbrook Pkwy south of Rasco Rd, these first-class complex features 8 lighted ballfields.	800 Stonewood Dr	Southaven	Sports/Fitness
Greg Maxey Park	This park features many acres of open play area, workout stations and paved walking trails.	6910 Tulane Rd E	Horn Lake	Neighborhood
Hernando Civic Center	This 53-acre park features 9 lighted ball fields, an equestrian arena, and a roller hockey rink. The park is home to the Hernando Saddle Club and the Junior Street Kings roller hockey program, run by the Mississippi River Kings.	Robertson Gin Rd south of W Oak Grove Rd	Hernando	Sports/Fitness
Hernando DeSoto River Park (Bass Landing)	Situated right on the banks of the Mississippi river just north of Lake Cormorant, the 41-acre Hernando DeSoto River Park, (formerly Bass Landing), is DeSoto County's only public access to the River.	14258 Bass Landing Rd	Lake Cormorant	Boating/Fishing
Hernando Point Novice Loop (Mountain Bike)	Natural surface trails. Backwater Trail is 2.2 miles, Phase 2 is 8 miles, and Phase 3 is 16 miles	At the end of Wheeler Rd	Hernando	Action
Hernando Point Recreation Area	Located on the shore of Arkabutla Lake, Hernando Point features a public beach, boat ramp, walking and bike trails, and 83 campsites with electric hookups.	At the end of Wheeler Rd	Hernando	Boating/Fishing
Hernando Soccer Complex	Located off of Robertson Rd north of the Hernando Courthouse Square, the new soccer complex will host a variety of soccer competitions and events.	Bella Vita Way	Hernando	Sports/Fitness
Ingrams Mill Park & Community Center	N/A	2283 Red Banks Rd S	N/A	N/A
Ivy Trails Community Park	This 10-acre park is in the Ivy Trails subdivision off of Davidson Rd north of Highway 302. The park offers a half mile walking trail	Intersection of Acree Ln and Ivy Cover Cv	Olive Branch	Neighborhood

Name	Description	Location	Community	Type
	and small pavilion.			
Jim Saucier Memorial Park	This park is located next to the Southaven Municipal Building and features a lake, walking trail, and exercise equipment.	8710 Northwest Dr	Southaven	Sports/Fitness
Johnson Creek Greenway	Once completed, the Johnson Creek Greenway will run east along Johnson Creek on US Highway 61 to its trailhead at the intersection of Church Road and Highway 301 in Horn Lake, MS. The trail will meander some 5 miles through hundreds of acres of pristine Delta lowlands.		Walls	Nature
Kaitlyn Ridge Park	This neighborhood park features a playground and open space.	Kaitlyn Ridge Subdivision off of Delta View Rd	Walls	Neighborhood
Kentwood North	Kentwood North offers swings, a slide and picnic tables for your family to enjoy.	2622 Brachtan Cv E	Horn Lake	Neighborhood
Kentwood South	Kentwood south boasts a nature lined walking trail with a small playground and lots of open play space.	2745 Waverly Dr	Horn Lake	Neighborhood
Lake Cormorant Community Park	Located just off of Highway 61 in Western DeSoto County, this park is next to the Community Center and features a walking trail and ball fields. The walking trail is approximately 1/3 mile in length	3100 Old Hwy 61	Lake Cormorant	Neighborhood
Latimer Lakes Greenaway		5633 Tulane Rd N	Horn Lake	Neighborhood
Latimer Lakes Park	This park has plenty of open play space, a large playground, nature lined trails, paved walking trails, lakes for fishing, a 20-hole disk golf course, lighted tennis courts, football and baseball fields, volleyball court and a skateboard park.	5633 Tulane Rd N	Horn Lake	Neighborhood

Name	Description	Location	Community	Type
Lee's Summit Park	Lee's Summit Park has a playground, walking trails, a pond (no fishing), and a small pavilion available for rental. The short walking trail is 1,415 feet long, and the wooded walking trail is 3,200 feet, for a total of 4,615 linear feet combined.	1270 Montieth (behind Walmart)	Hernando	Neighborhood
Life Park	This neighborhood park features backstops and a walking trail.	140 Guthrie Dr	Southaven	Neighborhood
Millford Park	This park boasts a large wooded natural area.	7900 Millford Dr	Southaven	Nature
Milton Kuykendall Sports & Fitness Park	Milton Kuykendall Sports & Fitness Park has an oval walking track with exercise equipment on the south end of the field.	161 E South Street (Old High School Football field)	Hernando	Sports/Fitness
North Outlet Trail Arkabutla	This trail is part of the Coldwater River Nature Trail System and is in the North Outlet Channel Recreation Area. This network of trails encompasses two hiking trails (one trail is 3 miles in length and the other is 5 miles in length) and the Big Oak Nature Trail which is a self-guided interpretive trail.	Arkabutla Lake Rd	Hernando	Action
Olive Branch City Park	This 135-acre park offers tennis courts, 3 ball field complexes, an 8-lane track, 2 miles of walking trails with exercise stations, a half mile nature trail, an amphitheater, playground, 2 Picnic pavilions, and a mountain bike trail.	8267 Goodman Rd E	Olive Branch	Sports/Fitness
Outlet Channel Public Use Area	Located below the dam at the end of Hwy 301 South, this site features excellent fishing, as well as picnic sites and a playground.	Arkabutla Lake Rd	Hernando	Boating/Fishing
Parkway Cove Park	Parkway Cove Park is a small neighborhood park with a playground for children ages 2-5 years of age.	1900 E Parkway	Hernando	Neighborhood
Pecan Grove Park	This small park features a playground, picnic area, and walking trail.	7205 Pecan Hill Rd	Southaven	Neighborhood
Phillip Leach Rotary Park	This park features soccer fields and a playground.	365 Rasco Rd	Southaven	Neighborhood

Name	Description	Location	Community	Type
Pleasant Hill Public Use Area	Located on Arkabutla Lake at the end of Fogg Rd S, this site features a public beach and boat ramp.	6285 Pleasant Hill Pt	Hernando	Boating/Fishing
Plum Point Park	This neighborhood park features a playground and picnic tables.	5135 Pear Dr	Southaven	Neighborhood
Renasant Park	Renasant Park is Hernando's newest park. This 70-acre park features a 6,000 square foot state-of-the-art skate park facility.	3335 Hwy 51 S (across from Tegra Medical)	Hernando	Action
Robertson-Donald Park	This 12.5-acre park is located near the intersection of Hwy 302 and 301. It features 2 lighted softball fields, a concession stand, playground area, and picnic area. Southaven Lady Tigers, LLC manages the ball fields and schedules events and tournaments.	7369 Hwy 301 N	Walls	Sports/Fitness
Ross Point Park	This neighborhood park features a playground, walking trail, and plenty of open space.	735 Steward Ln	Southaven	Neighborhood
Shadow Oaks Park East	Shadow Oaks East is tucked away in the heart of Shadow Oaks with its large open play space and swings.	6495 Sandhurst Dr	Horn Lake	Neighborhood
Shadow Oaks Park West	Shadow Oaks West features a small covered shade pavilion, open play space and a small playground. Paved walking trails run through this park.	4350 Shadow Glen Dr	Horn Lake	Neighborhood
Snowden Grove Park	Snowden Grove features Southaven's award-winning baseball complex, with 17 state-of-the-art fields hosting numerous tournaments. Also onsite is BankPlus Amphitheater, a 7000-capacity outdoor concert venue that hosts the top touring acts in the country.	Intersection of Getwell Rd N and Nail Rd E	Southaven	Sports/Fitness
Southaven Golf Center	The 9-hole course at the Southaven Golf Center facility features 2,211 yards of golf from the longest tees for a par of 33.	8925 Swinnea Rd	Southaven	Sports/Fitness
Southaven Skate Park	Southaven Skate Park	1320 Rasco Rd W	Southaven	Action

Name	Description	Location	Community	Type
Southaven Soccer Complex	This facility features 8 soccer fields.	4700 Stateline Rd W	Southaven	Sports/Fitness
Southaven Tennis Complex	Located off Malone Rd south of Hwy 302, the tennis complex features both outdoor and indoor facilities.	3750 Freeman Rd	Southaven	Sports/Fitness
Southern Pines Park	This lakeside park features a playground and plenty of open space.	6655 Blue Spruce Dr	Southaven	Neighborhood
Southridge Park	The park is 19 acres in size and borders Lick Creek. Amenities include a playground with rubberized safety surfacing, half mile walking trail, picnic tables, benches, baseball practice area with backstop, and 2-acre lake.	9730 Eva Dr	Olive Branch	Neighborhood
Swinnea Park	This park features a small playground and a trail through a wooded natural setting.	Swinnea Rd and Joann Dr	Southaven	Neighborhood
T. Burma Hobbs Park	T. Burma Hobbs has open play space with a small covered shade pavilion, monkey bars and swings	3530 Laurel Cv	Horn Lake	Neighborhood
Trinity Pointe Park	This lakeside park features a playground and walking trail.	7450 Stonegate Blvd	Southaven	Neighborhood
Vicksburg Park	This small neighborhood park features a playground.	1235 Vicksburg Dr	Southaven	Neighborhood
Vinson Park	Vinson Park is an open play area with plenty of room to run.	5938 Vinson Cv	Horn Lake	Neighborhood
Walthall Memorial Park	James Robert Walkhall Memorial Park is a beautiful open play space with paved walking trails.	2500 Meadowbrook Dr	Horn Lake	Neighborhood
White Ash Park	This park features a playground and picnic area amid plenty of open space.	7490 White Ash Dr.	Southaven	Neighborhood
Wooten Park	Wooten Park features a beautiful large playground, paved walking trails, pavilion with picnic tables, restrooms, swings, and baseball fields.	2690 Nail Rd W	Horn Lake	Neighborhood

Source: <https://dcms-gis.maps.arcgis.com/home/index.html> ;
<https://www.coldwaturnatureconservancy.org/parks-and-trails/>

According to the United States Department of the Interior National Park Service Land & Water Conservation Fund (LWCF), 9 recreation projects within the study area have been supported since 1965. Section 6(f)(3) of the L&WCF Act assures that once an area has been funded with L&WCF assistance, it is continually maintained in public recreation use unless National Park Service (NPS) approves substitution property of reasonably equivalent usefulness and location and of at least equal fair market value.

Table N-2. Land & Water Conservation Fund: Study Area Recreation Projects since 1965

Grant Element Title	Grant Sponsor	Fiscal Year	Amount
Horn Lake Park	City of Horn Lake	1975	\$63,471.67
Horn Lake Park Improvements	City of Horn Lake	2003	\$75,000.00
Hernando – Lee’s Summit Park	City of Hernando	2006	\$150,000.00
Hernando City Park	City of Hernando	1987	\$29,999.99
DeSoto County Park	DeSoto County	1980	\$169,091.42
Olive Branch Community Park	City of Olive Branch	1980	\$229,771.06
DeSoto County Community Parks	DeSoto County	1986	\$44,999.99
Olive Branch City Park	City of Olive Branch	2002	\$90,000.00
City of Olive Branch	City of Olive Branch	2015	\$150,000.00
			\$1,002,334.13

Source: <https://www.lwcfcoalition.com/map-of-lwcf>
Data accessed April 2020

Section 2

Figures

2.1 RECREATION FIGURES

Tables N-3 through N-5 show recreation areas overlaid with the structural features of the Tentatively Selected Plan.

Figure N-3. Recreation at Channel Enlargement

DeSoto County Study - Recreation at Channel Enlargement



Figure N-4. Recreation at Cow Pen Creek Detention Site

DeSoto County Study - Recreation at Cow Pen Creek Detention

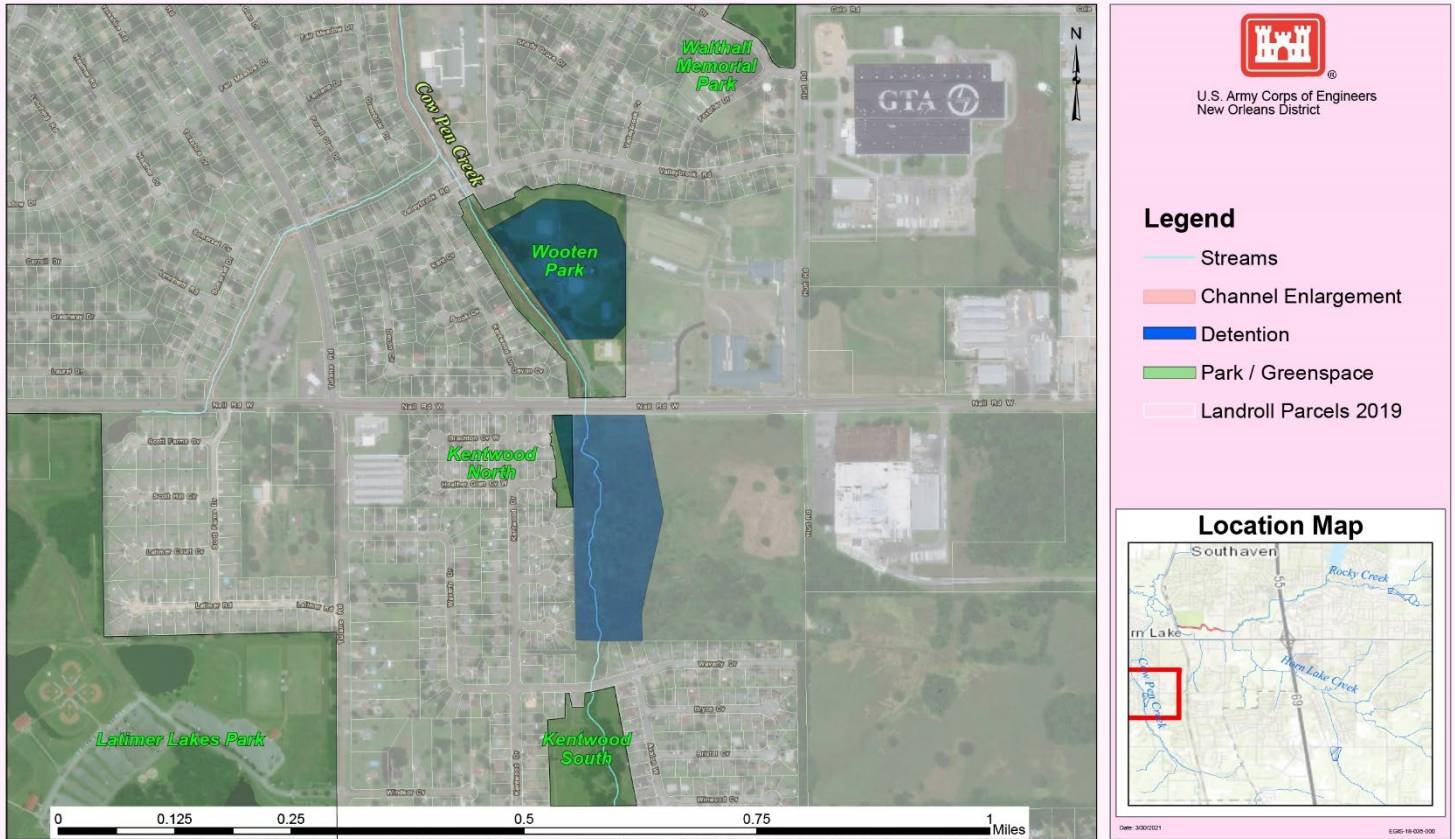
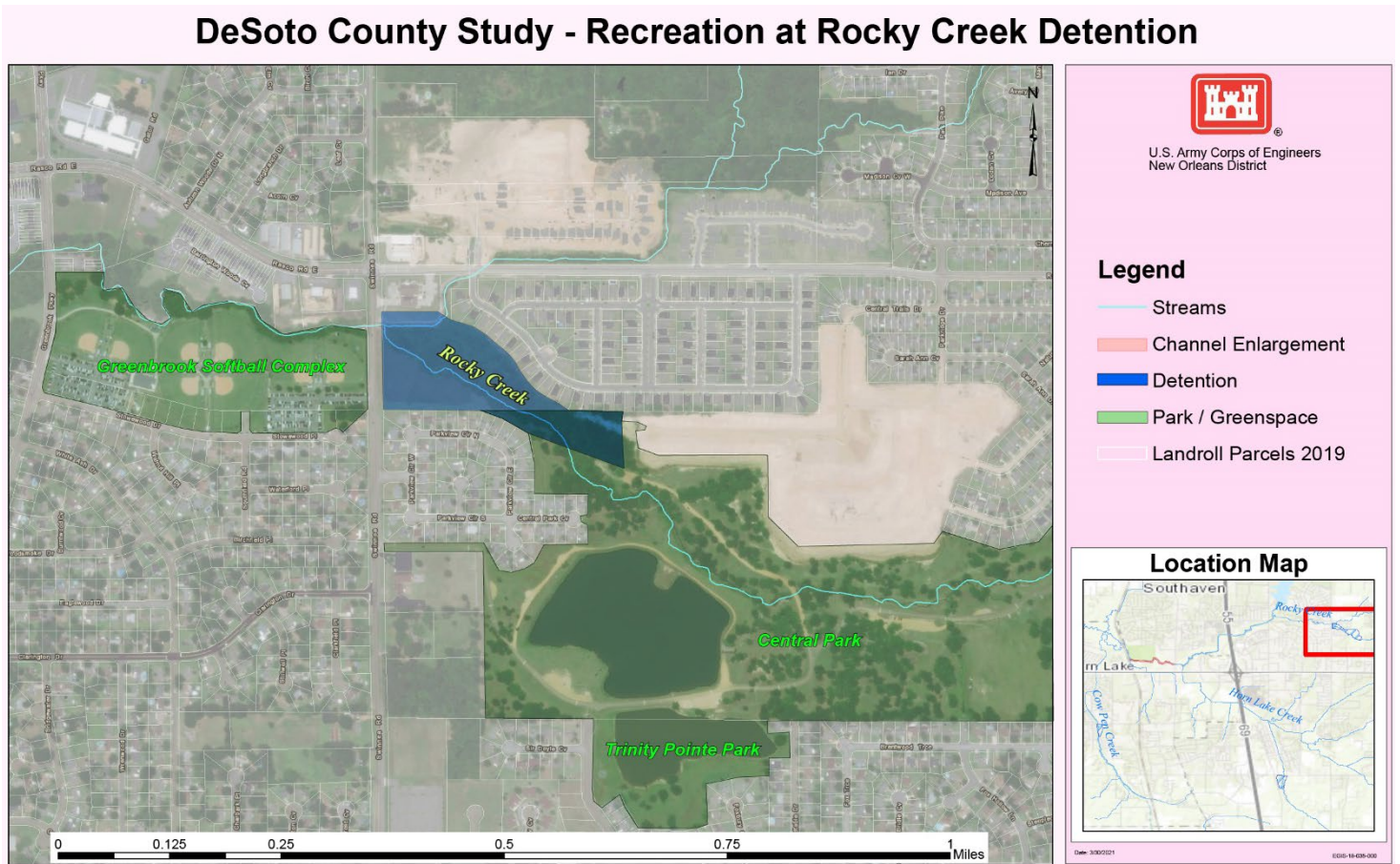


Figure N-5. Recreation at Rocky Creek Detention Site



References and Resources

Project References:

Websites:

<https://dcms-gis.maps.arcgis.com/home/index.html>, Data accessed April 2020

<https://www.coldwaternatureconservancy.org/parks-and-trails/>, Data accessed April 2020

<https://www.lwcfcoalition.com/map-of-lwc>, Data accessed April 2020

List of Acronyms and Abbreviations

GIS	Geographic Information Systems
NPS	National Park Service
LWCF	Land and Water Conservation Fund
MDWFP	Mississippi Department of Wildlife, Fisheries and Parks
SCORP	Statewide Comprehensive Outdoor Recreation Plan